

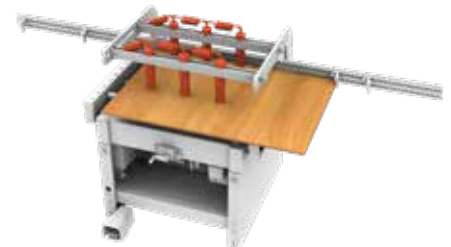
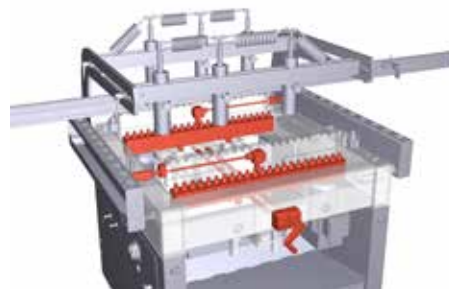


*Semiautomatic,
multispindle boring
machine with n. 2
parallel vertical boring
heads*



BORING SYSTEM 46

For vertical double-row line drilling on furniture sides. The ideal solution for bookcase, bookshelf and wardrobe manufacturers.



HIGH PRODUCTIVITY

Having a total interaxes of 704 mm and with two boring-heads, the machine can perform a double row of parallel line holes in just one working cycle, and process a 3000 mm long side-panel in just four working cycles.

QUICK SET-UP

Boring depth and distance between the heads are easily adjustable with numeric counters

EFFECTIVE PANEL HOLD-DOWN AND DRILLING ACCURACY

N. 6 quick-adjustable, pneumatic, safety clamps ensure the perfect panel hold-down, which results into always accurate drilling operations .



Small footprint: 2 sqm



Faster than a single-head boring machine



BORING SYSTEM 46

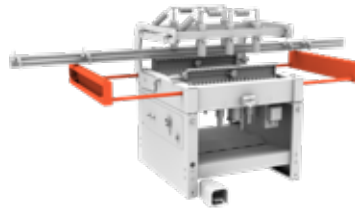
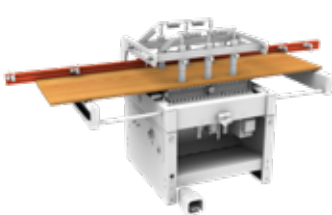
SERVICE

Worldwide after-sale service.

Real-time, on-line remote assistance through a dedicated augmented reality APP.
Spare-parts availability for up to 10 years, shipment within 24 hrs

DATA SHEET

Spindles	N 23 + 23
Left and right spindles on each head	N. 11 left - N. 12 right
Spindle interaxis	32 mm
Total interaxis	704 mm
Distance between rear head (head n°1) and rear fence	Min 15 mm - max 494 mm
Distance between front head (head n°2) and rear fence	Min 160 mm - max 639 mm
Max. tool diameter	40 mm
Max. boring depth	55 mm
Height of the working table	875 mm
Max. panel thickness	50 mm
Max. panel dimensions	700 x 3000mm
N. 2 motors	HP 2 / KW 1,5 - RPM 2800
Standard pneumatic pressure	BAR 6/ 8
Air consumption	NL 20 / cycle
Dust-collection hood diam.	80 mm
Overall dimensions	"1150 x 1130 x 1290 mm 2180 x 1130 x 1290 mm incl. extendable side roller tables
Net weight	370 kg
Package dimensions (machine)	1070 x 1220 x 1120mm
Fence package dimensions	1000 x 80 x 40 mm (each fence) packed in two separate cartons and inside the wooden crate
Total gross weight	410 kg



QUICK AND ACCURATE PANEL POSITIONING

Thanks to the aluminum fence (3000 x 80 mm) with 4 reference stops

COMFORT

Wide and solid, extendable, panel holders, both sides, giving additional support to the long working panels and easing their loading on the machine.

FAST AND EFFECTIVE

It considerably speeds up the vertical row drilling operations with respect to a single-head boring machine

SERVICE

+39 0571 635 433

service@maggi-technology.com

SALES

+39 0571 635 474

sales@maggi-technology.com

MAGGI TECHNOLOGY

Via delle Regioni, 299
50052 Certaldo (Firenze) Italia



MADE
in ITALY